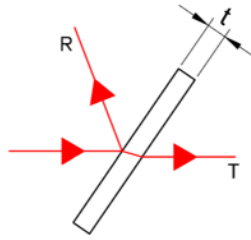


## Beamsplitter Plate



A plate type (mirror-type) beamsplitter is an optical window with semi-transparent mirrored coating to break a beam into two or more separate beams. A beamsplitter will reflect a portion of the incident energy (see reflection %), absorb a relatively small portion, and transmit the remaining energy (see transmission %). Beamsplitter plates have very neutral color characteristics and are often referred to as beam-splitters plate.

### Specifications:

Material.....BK7

Dimension Tolerance..... $\pm 0.1\text{mm}$

Thickness Tolerance..... $\pm 0.2\text{mm}$

Clear Aperture..... $>90\%$

Parallelism..... $< 1$  arc minute

Flatness..... $\lambda/8$  per 25mm @632.8nm

Wavefront Distortion..... $\lambda/4$  @632.8nm

Surface Quality.....60-40

Bevel.....Protective

### Coatings:

① Beamsplitter coating on S1,  $T/R=50/50\pm 5\%$ ,  $T=(T_s+T_p)/2$ ,  $R=(R_s+R_p)/2$ , AOI  $45^\circ$

② Anti-reflecting coating on S2,  $R<0.5\%$ , AOI  $45^\circ$

P/N	$\Phi$	t	$\lambda$
60101	10.0	3.0	532nm
60102	10.0	3.0	632.8nm
60103	12.7	3.0	532nm
60104	12.7	3.0	632.8nm
60105	25.4	3.0	532nm
60106	25.4	3.0	632.8nm
60107	10.0	3.0	450~650nm
60108	12.7	3.0	450~650nm
60109	25.4	3.0	450~650nm

- Dimension unit: mm
- Other sizes and coatings are available upon request.